



**BROCHURE**

**UNISTRUT®**

**PIPE HANGERS**

A PART OF





# UNISTRUT®

A PART OF  **atkore**  
INTERNATIONAL

**Our brand has evolved from a simple connection concept to a comprehensive engineered building and support system featuring a robust line of channels, fittings and fasteners. In addition to Unistrut's traditional channel accessories, Unistrut offers a range of pipe hangers that are designed for the support of applications for your commercial and industrial projects.**

**We provide customers with total-resource capability, making Unistrut the brand everyone asks for by name.**

## Table of Contents

---

Ring Hanger NFPA Size	4
Ring Hanger CT Size	5
Junior Ductile Iron Top Beam Clamp	6
Standard Clevis Hanger	7
Lightweight Clevis Hanger Plain	8
Malleable Split Ring	9
Malleable Split Ring (Copper-Colored Epoxy)	10
Standard Riser Clamp	11
Standard Riser Clamp (Copper-Colored Epoxy)	12
Cushion Clamp	13
Copper Tube Strut Clamp	14

For your 24/7 online resource, visit our website at [www.unistrut.com](http://www.unistrut.com)

- Downloadable Literature
- Unistrut Technical Library
- Downloadable CAD Drawings
- Unistrut News Updates

NOTE: Special orders are non-cancelable, non-returnable and non-refundable.

**UNISTRUT®**

A PART OF  **atkore**  
INTERNATIONAL

## Ring Hanger NFPA Size

**Size:**

Range 1/2" thru 8"

**Finish:**

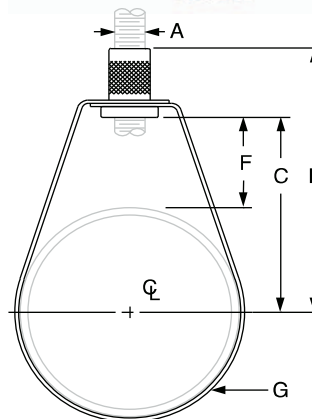
Electro-Galvanized (EG)

**Function:**

Recommended for the suspension of stationary, non-insulated pipe lines

**Features:**

- A keyed insert nut to ensure that the loop hanger and insert nut stay together
- Insert nut can be removed if required
- Complies with Federal Specification A-A1192A (Type 10) and MSS SP-69 (Type 10)
- NFPA standards for reduced rod sizes for Electro Galvanized (EG) only
- UL Approval for use with CPVC pipe



Unistrut Part No.	Pipe Size	Max Load	Weight	A Rod Size	B	C	F	G Width
P8300 NFPA	1/2	300	0.10	3/8	2 <sup>7</sup> / <sub>16</sub>	1 <sup>7</sup> / <sub>16</sub>	1 <sup>1</sup> / <sub>16</sub>	5/8
P8301 NFPA	3/4	300	0.10	3/8	2 <sup>11</sup> / <sub>16</sub>	1 <sup>11</sup> / <sub>16</sub>	1 <sup>1</sup> / <sub>8</sub>	5/8
P8302 NFPA	1	300	0.10	3/8	2 <sup>13</sup> / <sub>16</sub>	1 <sup>13</sup> / <sub>16</sub>	1 <sup>1</sup> / <sub>8</sub>	5/8
P8303 NFPA	1 1/4	300	0.11	3/8	2	1	1 <sup>1</sup> / <sub>16</sub>	5/8
P8304 NFPA	1 1/2	300	0.11	3/8	3	2	1 <sup>1</sup> / <sub>16</sub>	5/8
P8305 NFPA	2	300	0.14	3/8	3 <sup>3</sup> / <sub>16</sub>	2 <sup>3</sup> / <sub>16</sub>	1 <sup>1</sup> / <sub>16</sub>	5/8
P8306 NFPA	2 1/2	300	0.19	3/8	4 <sup>9</sup> / <sub>16</sub>	3 <sup>9</sup> / <sub>16</sub>	1 <sup>7</sup> / <sub>8</sub>	7/8
P8307 NFPA	3	1000	0.23	3/8	5	3 <sup>3</sup> / <sub>4</sub>	2	7/8
P8309 NFPA	4	1000	0.30	3/8	6	4 <sup>11</sup> / <sub>16</sub>	2 <sup>3</sup> / <sub>8</sub>	7/8
P8310 NFPA	5	1000	0.50	1/2	6 <sup>1</sup> / <sub>2</sub>	5 <sup>1</sup> / <sub>4</sub>	2 <sup>7</sup> / <sub>16</sub>	3/4
P8311 NFPA	6	1250	0.58	1/2	7 <sup>3</sup> / <sub>4</sub>	6 <sup>3</sup> / <sub>16</sub>	2	3/4
P8313 NFPA	8	1250	0.90	1/2	9 <sup>5</sup> / <sub>16</sub>	7 <sup>11</sup> / <sub>16</sub>	3 <sup>3</sup> / <sub>8</sub>	7/8

# Ring Hanger CT Size

**Size:**

1/2" thru 2"

**Finish:**

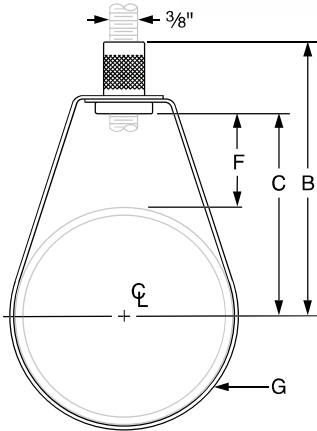
Copper-Colored Epoxy (PC)

**Function:**

Allows vertical adjustment of pipe after installation

**Features:**

- A keyed insert nut to ensure that the loop hanger and insert nut stay together
- Insert nut can be removed if required
- Complies with Federal Specification A-A1192A (Type 10) and MSS SP-69 (Type 10)
- NFPA standards for reduced rod sizes for Electro Galvanized (EG) only



Unistrut Part No.	Pipe Size	Max Load	Weight	B	C	F	G
P8300 CT	1/2	180	0.11	27/16	2	1 11/16	5/8
P8301 CT	3/4	180	0.11	2 11/16	1 13/16	1 1/8	5/8
P8302 CT	1	180	0.12	2 9/16	1 11/16	1 1/8	5/8
P8303 CT	1 1/4	180	0.13	2 1/2	1 5/8	1 5/16	5/8
P8304 CT	1 1/2	180	0.14	2 13/16	1 15/16	1 1/8	5/8
P8305 CT	2	180	0.16	2 3/4	1 7/8	7/8	5/8

## Junior Ductile Iron Top Beam Clamp

**Size:**

3/8" and 1/2" rod sizes

**Finish:**

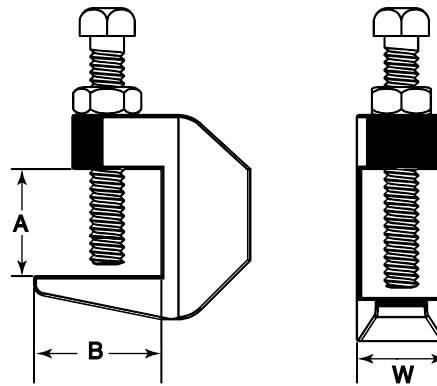
Plain (PL) and Electro-Galvanized (EG)

**Function:**

Structural attachment to top or bottom of metal beams, purlins, channel, or angle iron

**Features:**

- Set screw made of hardened steel
- Complies with Federal Specification A-A192A (Type 19) and MSS SP-69 (Type 19)



Unistrut Part No. Plain & EG	Rod Size	Max Load Top	Max Load Bottom	Weight	Opening A	B	W
P8000	3/8	500	250	0.33	3/4	1 1/16	7/8
P8001	1/2	950	760	0.34	3/4	1 1/16	1 1/16

# Standard Clevis Hanger

**Size:**

1/2" thru 8"

**Finish:**

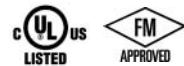
Plain (PL) and Electro-Galvanized (EG)

**Function:**

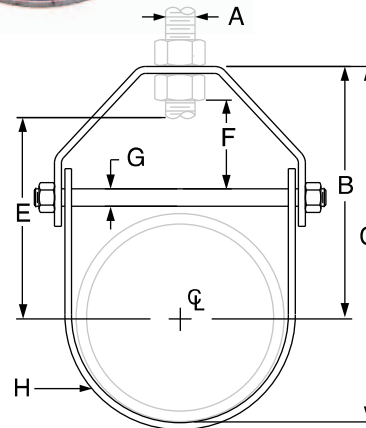
Allows vertical adjustment of pipe after installation

**Features:**

- Set screw made of hardened steel
- Maximum temperature Plain 650° F, Galvanized 450° F
- Complies with Federal Specification WW-H171 (Type 1) and MSS SP-69 (Type 19)
- When using an oversize clevis, it is recommended to install a full-width spacer on the cross bolt to prevent failure due to disfiguring the U-strap
- When using insulated pipe, order hanger sized to correspond to overall dimension. It is also recommended to use insulation shields



2 1/2" thru 8"



Unistrut Part No.	Pipe Size	Max Load	Weight	A Rod Size	B	C	E Rod Take Out	F Adjustment	G	H Width Lower
P8400	1/2	610	0.31	3/8	1 5/8	2 1/8	1 1/2	5/8	1/4	1
P8401	3/4	610	0.33	3/8	1 3/4	2 3/8	1 5/16	5/8	1/4	1
P8402	1 1/4	610	0.41	3/8	2 3/8	3 5/16	1 11/16	5/8	1/4	1
P8403	1	610	0.34	3/8	2 1/16	2 3/4	1 5/8	5/8	1/4	3/4
P8404	1 1/2	610	0.43	3/8	2 15/16	3 15/16	2 1/8	7/8	1/4	1
P8405	2	610	0.53	3/8	3 1/4	4 1/2	2 5/8	1 1/8	1/4	1
P8406	2 1/2	1130	0.74	1/2	3 3/4	5 1/4	3 3/16	1 5/16	3/8	1
P8407	3	1130	0.99	1/2	4 1/8	6	4 1/16	1 5/8	3/8	1
P8409	4	1130	1.43	5/8	5 3/8	7 3/4	4 1/2	1 11/16	3/8	1 1/4
P8410	5	1430	1.62	5/8	6 13/16	9 3/4	5 1/2	1 15/16	3/8	1 3/16
P8411	6	1940	3.26	3/4	8 1/4	11 3/4	5 3/4	1 11/16	1/2	1 7/16
P8413	8	2000	4.39	3/4	9 1/2	14	7 7/16	2	1/2	1 7/16

**UNISTRUT®**

A PART OF **atkore** INTERNATIONAL

## Lightweight Clevis Hanger Plain

**Size:**

2" thru 4"

**Finish:**

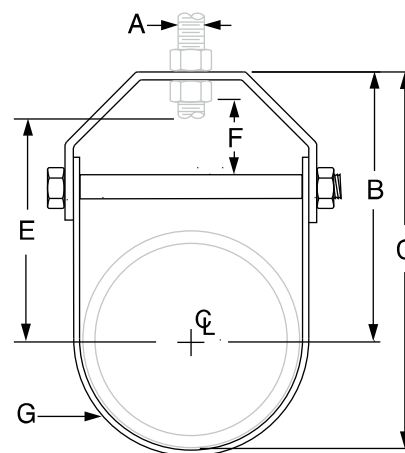
Plain (PL) and Electro-Galvanized (EG)

**Function:**

Allows vertical adjustment of pipe after installation

**Features:**

- Maximum temperature Plain 650° F, Galvanized 450° F
- Complies with Federal Specification WW-H171 (Type 1), (MSS) SP-69 (Type 1)
- When using an oversize clevis, it is recommended to install a full-width spacer in the cross bolt to prevent failure due to disfiguring the U-strap
- When using insulated pipe, order hanger sized to correspond to overall dimension. It is also recommended to use insulation shields



Unistrut Part No.	Size	Max Load	Weight	A Rod Size	B	C	E Rod Take Out	F Adjustment	G Width Lower
P8105	2	300	0.34	3/8	3 1/4	4 1/2	2 5/8	1 1/8	1/4
P8107	3	400	0.72	1/2	4 1/8	6	4 1/16	1 5/8	3/8
P8109	4	550	0.97	5/8	5 3/8	7 3/4	4 1/2	1 11/16	3/8



## Malleable Split Ring

### Size:

½" thru 2"

### Finish:

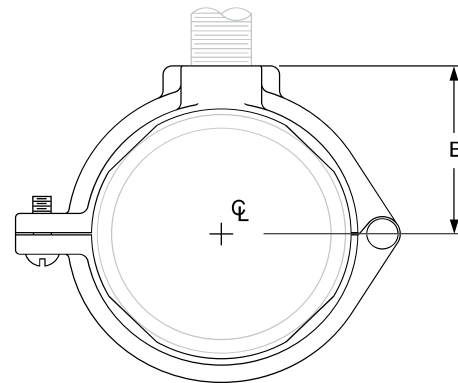
Plain (PL) and Electro-Galvanized (EG)

### Material:

Malleable Iron

### Features:

- 2 bolt design
- Hinged design provides for economical installation
- Designed to provide a tight fit on standard steel pipe
- Complies with Federal Specification WW-H171 (Type 25), (MSS) SP-58 and SP-69 (Type 12)



Unistrut Part No. Plain & EG	Tube Size	Rod Size	Max Load	Weight	B
P8200	½	⅜ - 16	300	0.13	⅞
P8201	¾	⅜ - 16	300	0.15	1 ⅛
P8202	1	⅜ - 16	300	0.17	1 ⅜
P8203	1 ¼	⅜ - 16	300	0.28	1 ¼
P8204	1 ½	⅜ - 16	300	0.29	1 ⅞
P8205	2	⅜ - 16	300	0.32	1 ⅝

**UNISTRUT®**

A PART OF **atkore**  
INTERNATIONAL

## Malleable Split Ring - Copper-Colored Epoxy

**Size:**

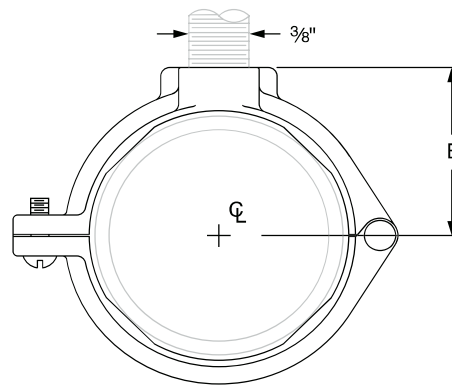
1/2" thru 2"

**Finish:**

Copper-Colored Epoxy (PC)

**Features:**

- 2 bolt design
- Hinged design provides for economical installation
- Designed to provide a tight fit on standard steel pipe
- Complies with Federal Specification WW-H171 (Type 25), (MSS) SP-58 and SP-69 (Type 12)



Unistrut Part No. Plain & EG	Tube Size	Rod Size	Max Load	Weight	B
P8200 CT	1/2	3/8 - 16	300	0.13	7/8
P8201 CT	3/4	3/8 - 16	300	0.15	1 1/16
P8202 CT	1	3/8 - 16	300	0.17	1 1/8
P8203 CT	1 1/4	3/8 - 16	300	0.28	1 1/4
P8204 CT	1 1/2	3/8 - 16	300	0.29	1 7/16
P8205 CT	2	3/8 - 16	300	0.32	1 5/8

## Standard Riser Clamp

### Size:

Range 1/2" thru 8"

### Finish:

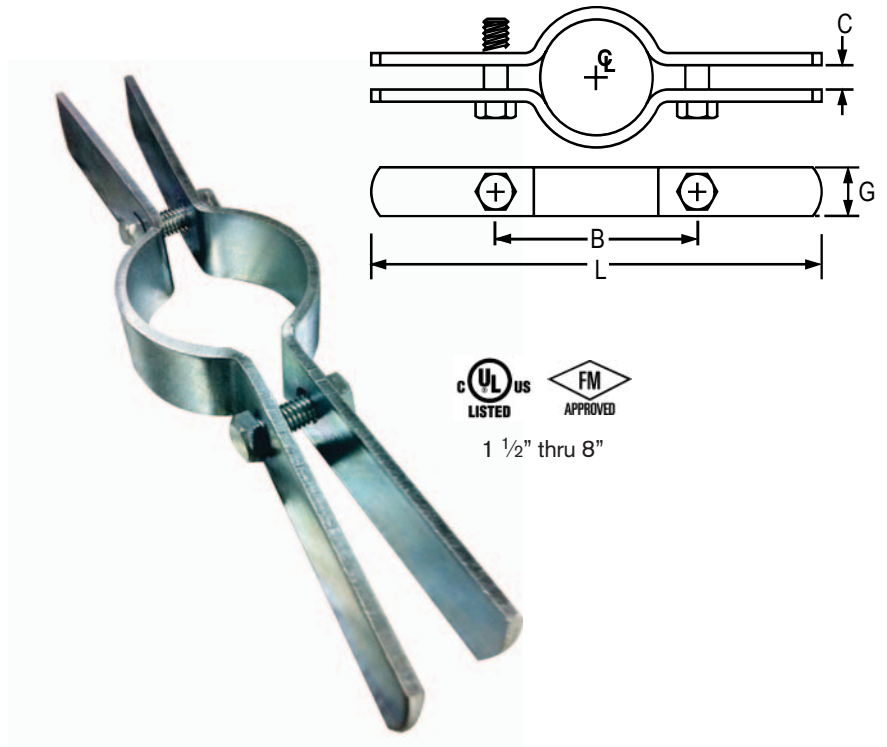
Plain (PL) and Electro-Galvanized (EG)

### Material:

Carbon Steel

### Features:

- Maximum temperature Plain 650° F, Galvanized 450° F
- Designed for standard iron pipe
- Complies with Federal Specifications A-A 1192A (Type 8) and MSS/SP-69 and SP-58 (Type 8)



Unistrut Part No. Plain & EG	Tube Size	Max Load	Weight	L	G Width	B	C	Bolt Size	Torque Value
P8500	1/2	220	0.80	9	1	2 1/8	3/8	3/8	19
P8501	3/4	220	0.80	9	1	2 7/8	3/8	3/8	19
P8502	1 1/4	250	1.06	9 1/4	1	3 1/2	3/8	3/8	19
P8503	1	220	1.04	9	1	3 1/8	3/8	3/8	19
P8504	1 1/2	250	1.08	10	1 3/16	3 7/8	3/8	3/8	19
P8505	2	300	1.16	10 1/4	3/16	4 1/4	1/2	3/8	19
P8507	3	500	1.56	11 3/4	1 3/16	5 1/2	1/2	3/8	19
P8509	4	750	1.70	13	1	7	1/2	1/2	50
P8511	6	1600	3.70	15 1/4	1 1/2	9	1/2	1/2	50
P8513	8	2500	7.40	18 1/4	1 1/2	12	5/8	5/8	50

**UNISTRUT®**

A PART OF **atkore**  
INTERNATIONAL

## Standard Riser Clamp - Copper-Colored Epoxy

**Size:**

Range 1/2" thru 2"

**Finish:**

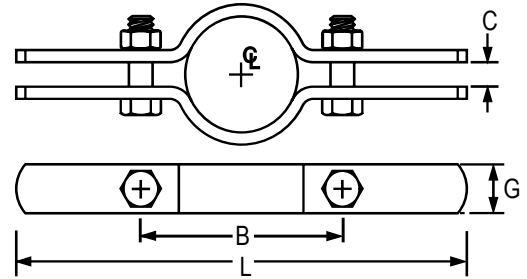
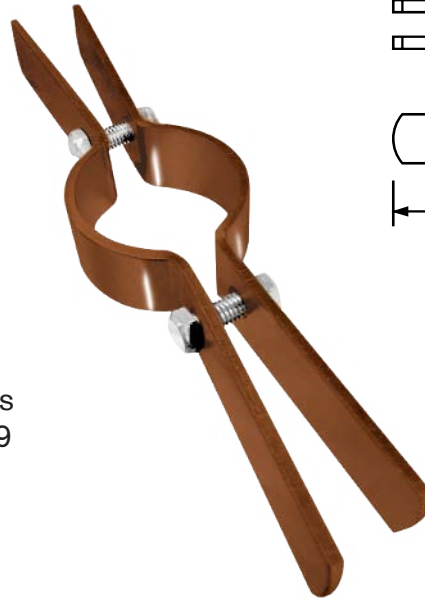
Copper-Colored Epoxy (PC)

**Material:**

Carbon Steel

**Features:**

- Maximum temperature Plain 650° F, Galvanized 450° F
- Designed for standard iron pipe
- Complies with Federal Specifications A-A1192A (Type 8) and MSS/SP-69 and SP-58 (Type 8)



Unistrut Part No. Plain & EG	Tube Size	Max Load	Weight	L	G Width	B	C	Bolt Size	Torque Value
P8500	1/2	220	0.80	9	1	2 1/8	3/8	3/8	19
P8501	3/4	220	0.80	9	1	2 7/8	3/8	3/8	19
P8502	1 1/4	250	1.06	9 1/4	1	3 1/2	3/8	3/8	19
P8503	1	220	1.04	9	1	3 1/8	3/8	3/8	19
P8504	1 1/2	250	1.08	10	1 3/16	3 7/8	3/8	3/8	19
P8505	2	300	1.16	10 1/4	3/16	4 1/4	1/2	3/8	19

## Cushion Clamp

### Size:

Range  $\frac{3}{8}$ " thru  $4\frac{1}{8}$ "

### Finish:

Electro-Galvanized (EG) or Type 316 Stainless Steel (SS)

### Cushion:

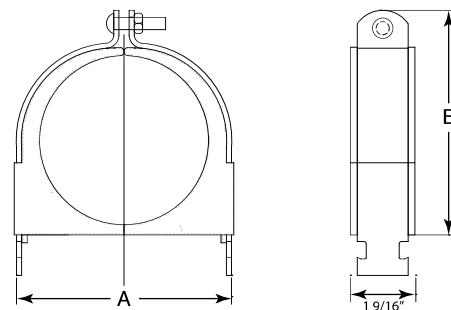
Thermoplastic elastomer

### Function:

Fits any standard  $1\frac{5}{8}$ " wide strut channel

### Features:

- Ideal for multiple runs while absorbing shock and vibration, reducing unwanted noise and preventing galvanic corrosion
- Interlock edges and channel locator legs help ensure that the cushion remains in place
- Temperature range:  $-65^{\circ}$  F to  $275^{\circ}$  F



Unistrut Part No.	Copper Tube Size (O.D.)	Max Load	Weight	I.D.	A	B
P8600-37 EG	$\frac{3}{8}$	400	0.11	0.34	0.85	1.16
P8600-50 EG	$\frac{1}{2}$	400	0.13	0.53	0.97	1.37
P8600-62 EG	$\frac{5}{8}$	400	0.14	0.60	1.05	1.54
P8600-75 EG	$\frac{3}{4}$	600	0.14	0.78	1.23	1.71
P8600-87 EG	$\frac{7}{8}$	600	0.15	1.15	1.30	1.89
P86001125 EG	$1\frac{1}{8}$	600	0.18	1.08	1.52	2.14
P8600137 EG	$1\frac{3}{8}$	600	0.20	1.31	1.80	2.31
P8600162 EG	$1\frac{5}{8}$	600	0.25	1.65	2.10	2.63
P8600-2125 EG	$2\frac{1}{8}$	800	0.46	2.05	2.71	3.31
P8600-262 EG	$2\frac{5}{8}$	800	0.51	2.51	3.17	3.90
P86003125 EG	$3\frac{1}{8}$	800	0.60	3.01	3.66	4.43
P8600-4125 EG	$4\frac{1}{8}$	1000	0.94	4.02	4.85	5.68

**UNISTRUT®**

A PART OF **atkore**  
INTERNATIONAL

## Copper Tube Strut Clamp

**Size:**

Range 1/2" thru 4"

**Finish:**

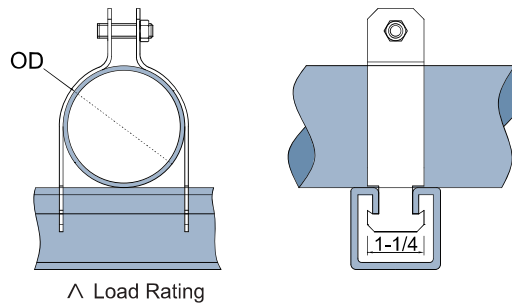
Copper-Colored Coated (PC)

**Material:**

Carbon Steel

**Features:**

- Maximum temperature Plain 650° F, Galvanized 450° F
- Designed for standard iron pipe
- Complies with Federal Specifications A-A1192A (Type 8) and MSS/SP-69 and SP-58 (Type 8)



Unistrut Part No.	Nominal Pipe Size	Max Load	Weight	O.D.
P8700-50 CP	1/2	400	0.08	5/8
P8700-75 CP	3/4	400	0.09	7/8
P8700-1 CP	1	600	0.13	1 1/8
P8700-125 CP	1 1/4	600	0.15	1 3/8
P8700-150 CP	1 1/2	600	0.16	1
P8700-2 CP	2	800	0.28	2 1/8
P8700-250 CP	2 1/2	800	0.33	2 5/8
P8700-3 CP	3	800	0.38	3 1/8
P8700-4 CP	4	1000	0.58	4 1/8



16100 S. Lathrop Ave.  
Harvey, IL 60426  
TOLL FREE / 800-882<sup>5</sup>543  
FAX / 708<sup>3</sup>397814

585 Finley Avenue  
Ajax, Ontario, L1S 2E4 Canada  
PHONE / 905-683-8131  
FAX / 905-683-8987

[www.unistrut.com](http://www.unistrut.com)



**Columbia-MBF**™



**KAF-TECH**®

**GEM**™  
FABRICATION



**UNISTRUT**®

**COPE**®

**TECTRON**Tube®

**RAZOR**®  
RIBBON

**UNISTRUT**®  
Construction



**FLEXHEAD**®  
INDUSTRIES



**SprinkFLEX**®